



LET'S ALL GO TO THE
MOVIES



October 4 - 14, 2024

NATIONAL GARDEN CLUB MISSION STATEMENT

National Garden Clubs, Inc. provides education, resources and national networking opportunities for its members to promote the love of gardening, floral design, civic, and environmental responsibility.

NATIONAL GARDEN CLUB CONSERVATION PLEDGE

I pledge to protect and conserve the natural resources of the planet earth and promise to promote education so we may become caretakers of our air, water, forest, land, and wildlife.

**Southern Charm Garden Club
Yaupon Garden Club**

Let's All Go to the Movies

AN NGC FLOWER SHOW

First Show: NGC Standard Flower Show
Second Show: NGC Horticulture Specialty Flower Show

Presented by
Southern Charm Garden Club and Yaupon Garden Club

At
Alabama National Fair
Garrett Coliseum

1555 Federal Drive • Montgomery, AL 36107
(334) 272 - 6831

On

First Show:

October 4 - 8, 2024

Friday: 4:00 pm - 9:00 pm
Saturday: 9:00 am - 9:00 pm
Sunday: 11:00 am - 9:00 pm
Monday: 12 (Noon) - 9:00 pm
Tuesday: 4:00 pm - 9:00 pm

Second Show:

October 9 - 14, 2024

Wednesday: 4:00 pm - 9:00 pm
Thursday: 4:00 pm - 9:00 pm
Friday: 9:00 am - 9:00 pm
Saturday: 9:00 am - 9:00 pm
Sunday: 11:00 am - 9:00 pm
Monday: 9:00 am - 9:00 pm

Open to the public with admission to the Fair. See Fair website:
www.alnationalfair.org for daily prices.

Member of:
National Garden Clubs Inc.
Deep South Garden Clubs
The Garden Club of Alabama
District VI

Let's All Go to the Movies

CONTENTS

	PAGE
Time Schedule.....	3 - 4
Show Committee	5 - 6
General Rules.....	7 - 8
Awards.....	9 - 10
Division I - Design	
Design Rules	11 - 12
Design Sections and Classes.....	13 - 14
Division II - Horticulture	
Horticulture Rules	15 - 17
Horticulture Sections and Classes.....	18 - 31
Division III - Education	
Education Rules	32 - 33
Education Exhibits	33
Division IV - Youth	
Youth Horticulture Rules.....	34
Youth Horticulture Sections and Classes	35
Youth Botanical Arts Photography Rules.....	36
Youth Botanical Arts Sections and Classes.....	37
Division V - Botanical Arts	
Botanical Arts: Artistic Crafts Rules and Classes	38
Botanical Arts: Photography Rules and Classes	39 - 42

Let's All Go to the Movies

TIME SCHEDULE for Entries and Judging

Monday, September 23, 2024

2:00 p.m. - 5:00 p.m.

Photography Entries

Wednesday, October 2, 2024

12:00 noon

Judging of Botanical Arts:
Photography

Thursday, October 3, 2024

12 noon - 5:00 p.m.

Entries of Container-Grown
Plants: Section M
Designs
Botanical Arts: Artistic Crafts

FIRST SHOW NGC STANDARD FLOWER SHOW

Friday, October 4, 2024

7:30 a.m. - 9:30 a.m.

Entries of Cut Specimens,
Container-Grown Plants:
Section M, Education Exhibits,
Designs, and Botanical Arts:
Artistic Crafts

9:30 a.m. - 10:30 a.m.

Judges Brunch

10:35 a.m.

Judging of Show

4:00 p.m.

Show Open to Public

Tuesday, October 8, 2024

6:00 p.m. - 9:00 p.m.

Removal of Horticulture,
Cut Specimens, and
Education Exhibits
All other entries remain

Let's All Go to the Movies

TIME SCHEDULE Continued

SECOND SHOW NGC HORTICULTURE SPECIALTY FLOWER SHOW

Wednesday, October 9, 2024

7:30 a.m. - 9:30 a.m.

Entries of Cut Specimens,
Container-Grown Plants:
Sections L, M, and N
2nd Show Education Exhibits

9:30 a.m. - 10:30 a.m.

Judges Brunch

10:35 a.m.

Judging of Show

Tuesday, October 15, 2024

7:30 a.m. - 12 noon

Dismantle Show

***The building will be closed at 9:00 p.m. on Monday, October 14th and no entries will be released until Tuesday, October 15th.**

Let's All Go to the Movies

FLOWER SHOW COMMITTEES and CHAIRMEN

(All area codes are 334 unless noted)

GENERAL CHAIRMAN	June Cyrus	313 - 0068
SCHEDULE CHAIRMEN	Barbara Eischens	399-8956
	Pam Hattemer	546-8497
	Rose Winkler	313-2002
STAGING/PROPERTIES	June Cyrus	313-0068
	Marie Butts	546-2888
HORTICULTURE ENTRY AND CLASSIFICATION CHAIRMEN/ CONSULTANTS		
	Chris Shoup	202-1842
	Kayren Pittman	201-2660
HORTICULTURE PLACEMENT CHAIRMEN		
	Elsa Wallace	224-0156
	Elissa Davis	799-5796
DESIGN ENTRY & CLASSIFICATION CHAIRMEN/ CONSULTANTS		
	Maude Wise	202-1120
	Barbara Eischens	399-8956
	Melissa Wilson	546-0704
EDUCATION ENTRY CHAIRMEN/ CONSULTANTS		
	Debbie Boutelier	309-4959
	Carolyn Gray	354-5051
YOUTH HORTICULTURE ENTRY & PLACEMENT CHAIRMAN		
	Marsha Killian	312-6290
YOUTH BOTANICAL ARTS: PHOTOGRAPHY CHAIRMEN		
	Rose Winkler	313-2002
	Beth DeBusk	538-5534

Let's All Go to the Movies

FLOWER SHOW COMMITTEES and CHAIRMEN

(All area codes are 334 unless noted)

BOTANICAL ARTS: ARTISTIC CRAFTS ENTRY CHAIRMEN/ CONSULTANTS

Julie Tyus	(256) 206-5577
June Cyrus	313-0068

BOTANICAL ARTS: PHOTOGRAPHY ENTRY & PLACEMENT CHAIRMEN/CONSULTANTS

Rose Winkler	313-2002
Beth DeBusk	538-5534

JUDGES CHAIRMEN

Mary Long	462-4214
Pam Hattemer	546-8497

CLERKS CHAIRMEN

June Cyrus	313-0068
Debbie Boutin	590-1482

AWARDS CHAIRMEN

Mary Helen Mahan	201-6070
Jan Davis	549-2402

PUBLICITY

Flower Show Committee	313-0068
-----------------------	----------

HOSPITALITY

HOSTESS CHAIRMAN

Marsha Killian	312-6890
----------------	----------

JUDGES BRUNCH CHAIRMEN

First Show:	Carolyn Watkins, Yaupon Garden Club	868-0032
Second Show:	Anne Payne, Southern Charm Garden Club	220-7578

Let's All Go to the Movies

GENERAL RULES

1. This Flower Show conforms to the standards established by National Garden Clubs, Inc. (NGC). The *HANDBOOK FOR FLOWER SHOWS (HB)*, 2017 EDITION with any revisions printed in *THE NATIONAL GARDENER MAGAZINE (TNG)* is the authority for all issues not covered by the schedule, which is the LAW OF THE SHOW.
2. Competition in the Horticulture Division is open to any amateur gardener. Competition in the Design Division is open to members of the Southern Charm and Yaupon Garden Clubs, Flower Show Judges, Student Judges, Master Gardeners, and any other non-professional or amateur who has studied NGC, Inc. Handbook design rules. Pre-registration is required. Competition in the Youth Division is open to youth ages 8 - 18. Competition in the Botanical Arts Division Artistic Crafts Section A is open to any adult who has studied NGC, Inc. Handbook rules. Competition in the Botanical Arts Division - Section B Photography is open to any amateur, non-professional adult photographer.
3. Procedure for making entries varies from division to division. Procedure is stated in division rules.

All Entry tags are to be completed in advance if possible. **Must be filled out in pencil.**

4. Acceptance and Removal of exhibits:

First Show Acceptance

Pre-register Botanical Arts: Photography. Exhibits will be received no later than Monday, September 23, 2024 between 2:00 and 5:00 p.m.

First Show Container - Grown Plants: Section M and Designs may be received on Thursday, October 3, 2024 between 12 noon - 5:00 p.m. or Friday, October 4, 2024 between 7:30 a.m. and 9:30 a.m. Cut specimens and Education Exhibits will be received on Friday, October 4, 2024 between 7:30 a.m. and 9:30 a.m. Cut specimens, Section M, and Education Exhibits must be removed Tuesday, October 8, 2024 between 6:00 p.m. and 9:00 p.m. Designs, Botanical Arts: Artistic Crafts, and Photography Exhibits **MUST REMAIN** through both shows.

Second Show Acceptance

Cut Specimens, Planters: Section N, Container-Grown Plants: Sections L and M and second show Education Exhibits will be received only on Wednesday, October 9, 2024 between 7:30 a.m. and 9:30a.m.

Removal of Exhibits

The building will be closed at 9:00 p.m. on Monday, October 14, 2024 and no entries will be released. All exhibits must be removed on Tuesday, October 15, 2024, between 7:30 a.m. and 12 noon. The Flower Show Committee cannot be responsible for any property left after 12 noon on this date. Alabama National Fair will dispose of all items not picked up.

Let's All Go to the Movies

GENERAL RULES CONTINUE

5. An entry not completed by 9:30 a.m. on Friday, October 4, 2024 or 9:30 a.m. Wednesday, October 9, 2024, will be displayed and marked NFC (not for competition).
6. The judging of the First Show will begin at 10:35 a.m. on Friday, October 4, 2024. The judging of the Second Show will begin at 10:35 a.m. on Wednesday, October 9, 2024.
7. The Classification Chairman for each division checks exhibits for conformity to the schedule prior to judging. Final determination for conformance is the judges' responsibility.
8. The General Chairman and the Classification Chairman for each division are available during judging for possible consultation. They, along with the judges and clerks, are the only personnel on the floor during judging.
9. The decisions of the judges are FINAL. Awards may be withheld if not merited.
10. There is an emphasis on FRESH plant material; no artificial plant material is permitted in any exhibit in any division.
11. Each exhibitor is limited to one entry per class, except in the Horticulture Division and the Botanical Arts Horticulture Section.
12. The Southern Charm Garden Club, The Yaupon Garden Club and the Alabama National Fair will strive to assure the safety of all items after arrival and placement, but are not responsible for any loss or damage to exhibits. All properties should be marked inconspicuously with the name of the owner.
13. Any plant listed in the Alabama State Invasive watch list may not be entered as a specimen, but may be used in a design.
Ref: www.se-eppc.org/alabama
14. Plants on the endangered and threatened list may not be entered unless acquired in a lawful manner. www.plants.usda.gov/threat.html
Select by status, filter by state.
15. The primary horticulture nomenclature resource is www.plantsoftheworldonline.org.
16. The NGC Standard Flower Show and Horticulture Specialty Flower Show are open to the public after judging and throughout the duration of the Fair. There is no charge after admission into Fair.

Let's All Go to the Movies

AWARDS

THE NGC STANDARD SYSTEM OF AWARDING (HB pg. 5) is used in all Divisions.

Only one (1) first-place (blue) ribbon per class or subclass; must score 90 points or more.
Only one (1) second-place (red) ribbon per class or subclass; must score 85 points or more.
Only one (1) third-place (yellow) ribbon per class or subclass; must score 80 points or more.
One (1) or more Honorable Mention (white) ribbons as merited; must score 75 points or more.

AWARDS BEING OFFERED IN THE FLOWER SHOW

Design:

Division Award: One (1) Award of Design Excellence is offered to the highest scoring blue ribbon winner, scoring 95 or above, in the entire Design Division entered by an individual in the first show only.

Rosette of Gold Ribbons HB pg. 42

Section Award: One (1) Table Artistry Award is offered to the highest scoring blue ribbon winner scoring 95 or above, entered by an individual, meeting all section requirements in Section A, Classes 1 - 3 in the first show only. Minimum 4 exhibits per class.

Rosette of Burgundy Ribbons HB pg. 43

One (1) Petite Award is offered to the highest scoring blue ribbon winner, scoring 95 or above, entered by an individual, meeting all section requirements in Section B, Classes 4-6 in the first show only.

Small rosette of Blue and White Ribbons HB pg. 43

Horticulture:

Division Award: One (1) Award of Horticultural Excellence is offered to the highest scoring, correctly named, blue ribbon winner, scoring 95 or above in the entire Horticulture Division (from the Awards table) in both Friday's and Wednesday's Shows.

Rosette of Green, Orange and Blue ribbons HB pg. 40

Section Awards: Two (2) Arboreal Awards are offered to the highest, correctly named, blue ribbon winner, scoring 95 or above, meeting all section requirements in Section G, Classes 78 - 88 and Section H, Classes 89 - 102 in both Friday's and Wednesday's Shows.

Rosette of Green ribbons HB pg. 40

Nine (9) Award of Merit awards are offered to the highest, correctly named, blue ribbon winner, scoring 95 or above, meeting all section requirements in Sections A, B, C, D, E, F, I, J, and K, Classes 01 - 77 and 103 - 120 in both Friday's and Wednesday's Shows.

Rosette of Orange Ribbons HB pg. 41

Let's All Go to the Movies

AWARDS CONTINUED

Horticulture Continued:

One Grower's Choice Award is offered to the highest, correctly named, blue ribbon winner, scoring 95 or above meeting all section requirements in Section M in Friday's Show, Classes 127 -131.

Three (3) Grower's Choice Awards are offered to the highest, correctly named, blue ribbon winner, scoring 95 or above, meeting all section requirements in Section L, Classes 121-126; Section M, Classes 127-131; and Section N, Classes 132 - 134 in Wednesday's Show.

Rosette of Dark Green Ribbons HB pg. 41

Educational Top Exhibitor Award:

One (1) Award is offered to the highest scoring, blue ribbon exhibit, scoring 95 or above, entered by one or more exhibitors in both Friday's and Wednesday's Shows. Minimum of two (2) exhibits per show.

Rosette of Brown and White Ribbons HB pg. 44

Youth Top Exhibitor Awards:

One (1) Award per each of two age groups in Horticulture is offered to the highest scoring, blue ribbon exhibit, scoring 90 or above in both Friday's and Wednesday's Shows. One (1) Award per each of two age groups in Botanical Arts Photography is offered to the highest scoring, blue ribbon exhibit scoring 90 or above in Friday's Show. No minimum number of exhibits required. A total of six (6) awards offered in the Youth Division.

Rosette of Red, White, and Blue Ribbons HB pg. 44

Botanical Arts Top Exhibitor Award (Section Awards):

One (1) Botanical Arts: Artistic Crafts Award is offered to the highest scoring blue ribbon winner, scoring 95 or above, entered by an individual, meeting all sections requirements Section A, Classes 1 - 3, minimum of 4 exhibits per class.

Rosette of Navy Blue Ribbons HB pg. 44

One (1) Botanical Arts Photography Award is offered to the highest scoring blue ribbon winner, scoring 95 or above, entered by an individual, meeting all sections requirements in Section B, Classes 1 - 4; minimum of 4 exhibits per class.

Rosette of Black and White Ribbons HB. pg. 45

Let's All Go to the Movies

DIVISION I - DESIGN

Box Office Hits

DESIGN RULES

Exhibiting in the Design Division

1. Some plant material must be used in every exhibit. This includes fresh and/or dried plant material.
2. The exhibitor may enter multiple Classes within Design Division, but only one exhibit per Class.
3. The exhibit entered into competition must be the work of only one (1) exhibitor and that exhibitor's name must appear on the entry card.
4. If the designer is unable to fulfill the assignment, it is the designer's responsibility to provide a substitute.
5. If the designer is unavailable to transport and/or set up a completed design, a substitute person may enter the exhibit for the designer. The designer may still receive exhibiting credit if needed. This is permitted only for completed designs.
6. A single flower is not a design. Container-grown plants are fresh plant material and are permitted in the Design Division where appropriate, but are **never** considered floral designs.
7. Landscapes, scenes or anything representing an actual item of clothing, person, animal etc. are not considered acceptable in the Design Division.
8. Religious symbols used in a design must be displayed in a respectful manner.
9. Advance registration with the Design Entries Chairman is required by August 30, 2024.
10. Plant material and non-plant material permitted and not permitted in the Design Division are printed in the *HANDBOOK FOR FLOWER SHOWS, CHAPTER 7, pg. 80 - 81.*

Let's All Go to the Movies

DESIGN RULES CONTINUED

11. All plant material and design techniques used in the design must be identified on a card provided by the exhibitor and included with the entry tag.
12. The exhibitor is required to conform to the stated description and limitations of the design type if named in the class.
13. Rules for Design Types, Advanced Design Types, Table Designs and Table Appointments are printed in the *HANDBOOK FOR FLOWER SHOWS, CHAPTER 7*.
14. Entry cards for the Design Division are available from the Design Classification Chairman. Pre-registration is required.
15. Each class will consist of four (4) exhibits.
16. Plant material need not have been grown by exhibitor.
17. Fresh plant material may not ever be treated in any manner. Dried plant material may be treated.
18. Designer is on her/his honor that the design being entered has not been previously entered or previously judged in an NGC Flower Show.
19. The Scale of Points for Design is listed below:

Conformance	
To Type	7
To Schedule Requirements	7
Design Principles	48
Selection of Components	8
Organization of Components	8
Expression	8
Distinction	<u>14</u>
TOTAL	100

Let's All Go to the Movies

FIRST SHOW ONLY Friday, October 4, 2024 DIVISION I - DESIGN DESIGN CLASSES

Box Office Hits

Each class will consist of four (4) exhibits.
Eligible for Award of Design Excellence.

CONSULTANTS: MAUDE WISE: 272 - 9609 OR 202 - 1120
MELISSA WILSON: 546 - 0704
BARBARA EISCHENS: 399-8956
Pre-Registration is required.

SECTION A - *Musicals*

ELIGIBLE FOR TABLE ARTISTRY AWARD

Class 1. *The Wizard of Oz (1939) (HB pg. 76)*

A functional informal table for two on a 34 inches square card table 30 inches high. White background. A decorative unit must be included. The Flower Show Committee will provide card table. Table cloth and 3inches x 5inches card listing plant material required.

Class 2. *Sound of Music (1965) (HB pg. 76)*

A functional breakfast tray for one person staged on a 24 inches square white cube 30 inches high. White background. A decorative unit must be included. Cube provided by the Flower Show committee. A 3 inches x 5 inches card listing plant material required.

Class 3. *Singing in the Rain (1952) (HB pg. 76)*

An exhibition table staged on a 30 inches high table draped in black. A white wooden niche for background support is provided. Staging panel: 29 inches wide x 40 inches high x 22 inches deep. Underlay is optional. A decorative unit must be included. Plant material must be used, as needed, for the overall design. A 3 inches x 5 inches card listing plant material required.

Let's All Go to the Movies

DIVISION I - DESIGN DESIGN CLASSES CONTINUED

Box Office Hits

Each class will consist of four (4) exhibits.
Accessories optional (HB pg. 73, 81)

CONSULTANTS: MAUDE WISE: 272 - 9609 OR 202-1120
MELISSA WILSON: 546 - 0704
BARBARA EISCHENS: 399 - 8956
Pre-Registration is required.

SECTION B - *Action/ Adventure Movie* ELIGIBLE FOR THE PETITE AWARD

Class 4. *Star Wars (1977) (HB pg. 74)*

An 8 inches Illuminary design staged on a 30 inches high table draped in black. A black stage which is 12 inches wide x 12 inches deep and 18 inches high is where the design will be placed. Underlay encouraged. White background. A 3 inches x 5 inches card listing plant material required.

Class 5. *Raiders of the Lost Ark (1981) (HB pg. 75)*

An 11 inches Reflective design staged on a 30 inches high table draped in black. A black stage which is 16.5 inches wide x 16.5 inches deep and 18 inches high is where the design will be placed. Underlay encouraged. White background. A 3 inches x 5 inches card listing plant material required.

Class 6. *Avatar (2009) (HB pg. 74)*

A 5 inches Creative Line design staged on a 30 inches high table draped in black. A black stage which is 7.5 inches wide x 7.5 inches deep and 18 inches high is where the design will be placed. Underlay encouraged. White background. A 3 inches x 5 inches card listing plant material required.

Let's All Go to the Movies

DIVISION II - HORTICULTURE

Silent Films

HORTICULTURE RULES

1. All exhibits must be FRESH.
2. All exhibits must have been grown by the exhibitor.
3. Plant material must be in its natural state and may not be altered by application (treatment) of oil, commercial shine products, etc. that change the natural appearance. No wiring of specimens is permitted.
4. Only foliage and/or flowers naturally grown and still attached to the specimen are permitted in the Flower Show. Unattached foliage is never included with a cut bloom specimen.
5. All plant material must have been in the possession of the exhibitor the appropriate number of days listed in the chart below: (HB pg. 55)
9. Entry tags are to be filled out in advance, if possible. Must be completed in pencil.

Types of Plant Material	Length of Possession
Combination Plantings except troughs	6 weeks (growing together) HB July 2022
Annuals Vegetables and Fruits	90 days (no minimum for early maturing seeds and/or transplants)
Bulbs	90 days (no minimum for forced bulbs/corms/tubers/rhizomes)
Houseplants	90 days
Perennials (herbaceous)	90 days
Arboreals (Woody Ornamentals)	6 months
Troughs	6 months (growing together) HB July 2022

6. The rules for a single species cut or container-grown specimen are listed in the *HANDBOOK FOR FLOWER SHOWS* or its supplement *Horticulture Exhibiting and Judging*.
7. In order to receive an NGC Top Exhibitor Award, the exhibitor must identify an entry by its binomial name or currently acceptable scientific designation (Consult *HANDBOOK FOR FLOWER SHOWS*, "Exhibiting in the Horticulture Division, Chapter 6.")
8. Entry tags for the Horticulture Division are available from the Flower Show Chairman, and the Fair Office. A printable working copy of the tag is available online at the Alabama National Fair website: www.alnationalfair.org. Online tag can be printed, completed, brought with entry and transferred to the official tag when entry is submitted. Pre-registration is not required.

Let's All Go to the Movies

HORTICULTURE RULES CONTINUED

9. Entry tags are to be filled out in advance, if possible. Must be completed in pencil.
10. Cut specimens should not have foliage below the water line, except for *Gladiolus*.
11. If a plant is considered a flowering plant, it should be exhibited as a flowering specimen. Foliage plants may flower, but should be exhibited as foliage plants if they are grown for their leaves.
12. Specimens with a class designation in the schedule may not be entered in the "Any other worthy named specimen" class.
13. The Horticulture Classification Chairman and/or General Show Chairman are free to subdivide classes by color, form, size, cultivar, variety or other distinguishing characteristics.
14. The Scales of Points for Horticulture are listed in the schedule. (pg. 17)
15. Glass bottles will be furnished by the Flower Show Committee for all cut specimens.
16. Plastic wrap may be used to improve pose of specimen.
17. Acceptance of Horticulture Exhibits:

First Show

Container-Grown Plants in Section M will be received on Thursday, October 3, 2024 between 12 noon and 5:00 p.m.

Horticulture cut specimens and Container - Grown Plants: Section M will be received Friday, October 4, 2024 between 7:30 a.m. and 9:30 a.m.

Second Show

Cut specimens and exhibits for Container-Grown Plants: Sections L, M, and N will be received only on Wednesday, October 9, 2024 between 7:30 a.m. and 9:30 a.m.

18. Pots may be no larger than 16 inches diameter and easily moveable. A saucer, provided by the exhibitor, must be placed under each pot to collect water. Specimens may be double - potted. Inner container should not be visible.
19. Exhibitors may enter one specimen in each sub-class for all classes. Classes may be further subdivided from schedule listing by color, form, size, cultivar, variety, or other distinguishing characteristic by the Horticulture Committee. The committee may also correct an incorrect entry tag or disqualify any specimen not of show quality prior to judging.
20. Stem length should be proportional to the bloom.

Let's All Go to the Movies

SCALES OF POINTS

All Cut or Container-Grown Horticulture Specimens and Collections (Arboreal, Flowering, Foliage, Fruit/Vegetable/Nuts)

Criteria	Value (Points)
Conformance	5
Plant Identification	5
Peak of Perfection	
Form	20
Color	20
Maturity/Size	20
Condition/Blemishes	15
Grooming/Staging	
Grooming	10
<u>Staging</u>	<u>5</u>
TOTAL	100

Combination Plantings and Gardens

Criteria	Value (Points)
Conformance	5
Plant Identification	5
Labeling	5
Peak of Perfection	
Form	10
Color	10
Condition	10
Show-worthy Size	5
Overall Effect	30
Creative/Distinctive	5
Grooming	10
<u>Staging</u>	<u>5</u>
TOTAL	100

Let's All Go to the Movies

FIRST AND SECOND SHOW DIVISION II - HORTICULTURE

Silent Films

ELIGIBLE FOR AWARD OF HORTICULTURAL EXCELLENCE

SECTION A

Gone With The Wind (1939)

Cut Flower(s) from Annuals

ELIGIBLE FOR AWARD OF MERIT

One stem or spray unless noted.

Leaves or foliage should be included with **mandatory flowers**.

- Class 01. *Angelonia angustifolia* hybrids
- Class 02. *Begonia*
a. Angelwing or cane-type
(Rex belongs in decorative foliage)
b. Wax or semperflorens
- Class 03. *Catharanthus roseus/vinca* hybrids (Periwinkle)
- Class 04. *Celosia*
a. *C. argentea*, 'Plumosa' (feathery)
b. *C. cristata*, Crested (crested or fan shaped)
- Class 05. *Cosmos*
- Class 06. *Datura*, (Angel Trumpet - erect type)
- Class 07. *Impatiens*
a. *I. hawkeri* (New Guinea hybrids)
b. *I. walleriana*
- Class 08. *Pentas lanceolata* (spray)
- Class 09. *Salvia coccinea*

Let's All Go to the Movies

Section A (continued) Cut Flowers(s) from Annuals

- Class 10. *Tagetes*, (Marigold)
 a. *T. erecta* (American Marigold - large solitary flower on single stem with 3 leaves)
 b. *T. patula* (French Marigold - spray 6 - 12 inches in height a minimum of 5 open blossoms)
- Class 11. *Tithonia rotundifolia* (Mexican Sunflower)
- Class 12. *Zinnia*
 a. *Z. angustifolia* (Narrowleaf)(spray)
 b. *Z. elegans* (1 - 5 inches wide with a set of leaves)
- Class 13. Any other worthy annual not listed.

SECTION B

Please Don't Eat the Daisies (1960)

Cut Flower(s) from Perennials

ELIGIBLE FOR AWARD OF MERIT

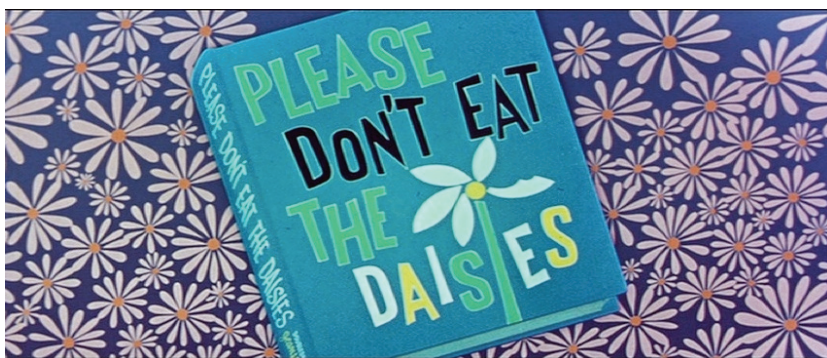
Specimen must be less than 30 inches.

- Class 14. *Aster novi-belgii* syn. *Symphotrichum novi-belgii*
- Class 15. *Chrysanthemum*
 a. *C. x morifolium* (Garden Mum - spray)
 b. *C. zawadzki*, 'Clara Curtis'
- Class 16. *Cuphea*
- Class 17. *Gerbera jamesonii* (Gerbera Daisy)
- Class 18. *Helianthus angustifolius* (Swamp Sunflower)
- Class 19. *Hibiscus rosa-sinensis* (not Confederate Rose)
- Class 20. *Lantana camara*
- Class 21. *Ruellia brittoniana* (Mexican Petunia)

Let's All Go to the Movies

Section B (continued) Cut Flower(s) from Perennials

- Class 22. *Salvia/Sage (flowering)*
- a. *S. elegans* (Pineapple Sage)
 - b. *S. farinacea* (Mealycup)
 - c. *S. greggii* (Autumn Sage)
 - d. *S. guaranitica* (Black and Blue)
 - e. *S. x Indigo Spires* hybrids
 - f. *S. leucantha* (Mexican Bush)
 - g. *S. madrensis* (Forsythia Sage)
- Class 23. *Sedum* (with floret)
- Class 24. *Veronica* (Speedwell)
- Class 25. Any other worthy perennial not listed.



Let's All Go to the Movies

SECTION C

Where The Red Fern Grows (1974)

Fern and Fern-Like Cut Specimens

ELIGIBLE FOR AWARD OF MERIT

Specimen not to exceed 30 inches.

- Class 26. *Asparagus densiflorus fern*
a. 'Meyersii' (Foxtail - upright)
b. 'Sprengeri' (Arching or drooping)
- Class 27. *Asplenium nidus* (Bird's Nest Fern)
- Class 28. *Cyrtomium* (Holly Fern)
- Class 29. *Dryopteris erythrosora* (Autumn Fern)
- Class 30. *Nephrolepis*
a. *N. biserrata*, (Macho)
b. *N. cordifolia* (Petticoat or Fishtail Fern)
b. *N. exaltata*, (Boston)
c. *N. obliterated*, 'Kimberly Queen'
- Class 31. *Pteris* (Table Fern)
- Class 32. *Rumohra adiantiformis* (Leatherleaf Fern)
- Class 33. *Thelypteris syn. Dryopteris T. Kunthii* (Southern Shield or Wood Fern)
- Class 34. Any other worthy fern not listed.

Let's All Go to the Movies

SECTION D

Up In Smoke (1978)

Cut Specimens of Herbs

ELIGIBLE FOR AWARD OF MERIT

- Class 35. *Artemisia*
- Class 36. *Cymbopogon citratus* (Lemon Grass)
- Class 37. *Foeniculum vulgare* (Fennel)
- Class 38. *Lauris nobilis* (Bay Laurel)
- Class 39. *Melissa officianalis* (Lemon Balm)
- Class 40. *Mentha* (Mint)
a. *M. spicata* (Spearmint)
b. *M. xpiperita* (Peppermint)
- Class 41. *Ocimum* (Basil)
a. Sweet
b. Purple
- Class 42. *Origanum vulgare* (Oregano)
- Class 43. *Pelargonium citrosum*, 'Citronella'
- Class 44. *Petroselinum crispum* (Parsley)
- Class 45. *Salvia officinalis* (Sage)
- Class 46. *Salvia rosmarinus* (Rosemary)
- Class 47. *Thymus vulgaris* (Thyme)
- Class 48. Any other worthy herb not listed.

Let's All Go to the Movies

SECTION E

Send Me No Flowers (1964)

Cut Decorative Foliage (no bloom)

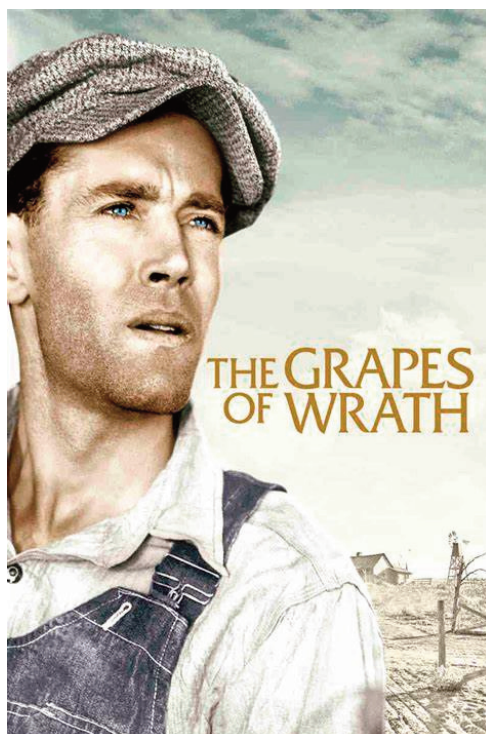
ELIGIBLE FOR AWARD OF MERIT

- Class 49. *Alocasia*
 a. *A. macrorrhiza*, (Giant Taro)
 b. *A. x amazonica*, (African Mask)
 c. *A. 'Yellow Tail'*
- Class 50. *Alpinia zerumbet* 'variegata' (Shell Ginger)
- Class 51. *Aspidistra elatior* (Cast Iron Plant)
 a. Green
 b. Variegated
- Class 52. *Begonia* (non flowering ex. Rex Hybrids)
- Class 53. *Codiaeum variegatum* (Croton)
- Class 54. *Coleus scutellarioides* (Coleus)
- Class 55. *Cycas revoluta* (Sago Palm)
- Class 56. *Cyperus* (Umbrella Plant)
 a. *C. alternifolius*
 b. *C. papyrus* (Threadleaf)
- Class 57. *Dieffenbachia*
- Class 58. *Dracaena trifasciata/ sanseveria* (Snake Plant)
- Class 59. *Monstera deliciosa* (Split-leaf Philodendron) (Swiss cheese with oval holes)

Let's All Go to the Movies

Section E (continued) Cut Decorative Foliage (no bloom)

- Class 60. *Perilla frutescens*, Magilla™ 'Tricolor'
- Class 61. *Philodendron bipinnatifidum*
- Class 62. *Schefflera arboricola*
- Class 63. *Senecio cineraria* (Dusty Miller)
- Class 64. *Stachys* (Lamb's Ear)
- Class 65. *Strobilanthes dyeanus* (Persian Shield)
- Class 66. *Tetrapanax papyrifera* (Rice Paper Plant)
- Class 67. *Tradescantia pallida* (Purple Heart)
- Class 68. Any other worthy cut decorative foliage not listed.



Let's All Go to the Movies

SECTION F

Grapes of Wrath (1940)

Cut Specimens from Vines

ELIGIBLE FOR AWARD OF MERIT

Specimen length should be a minimum of 12 inches and a maximum of 24 inches.

- Class 69. *Dipladena* (Mandevilla)
- Class 70. *Epipremnum aureum* (Pothos)
- Class 71. *Hedera* (Ivy)
a. Green
b. Variegated
- Class 72. *Ipomoea batatas* (Sweet Potato Vine)
a. Lime Green
b. Dark Colors
- Class 73. *Philodendron hederaceum syn. scandens* (Heart-Shaped Vine)
- Class 74. *Plumbago*
- Class 75. *Syngonium podophyllum* (Arrowhead Vine)
- Class 76. *Thunbergia alata* (Blackeyed Susan Vine)
- Class 77. Any other worthy vine not listed.

Let's All Go to the Movies

SECTION G

A Tree in Brooklyn (1945)

Arboreal Flowering, Fruited, Coned, or Berried Branch of a Wooded Shrub or Tree

ELIGIBLE FOR ARBOREAL AWARD

Arboreal specimens should be minimum of 12 inches and maximum of 30 inches in length from cut end to apical tip, and include several nodes and a woody central leader to be eligible for the Arboreal Award.

- Class 78. *Brugmansia* (Angel's Trumpet)
- Class 79. *Camellia sasanqua*
- Class 80. *Callicarpa americana* (Beautyberry) (leaves off)
- Class 81. *Duranta erecta* (Dewdrop)
- Class 82. Fruit/Vegetable (attached to foliage)
- Class 83. *Hibiscus mutabilis* (Confederate Rose)
- Class 84. *Hydrangea*
 a. *H. macrophylla* (Mophead)
 b. *H. paniculata* 'Lime Light'
 c. *H. quercifolia* (Oak Leaf)
- Class 85. *Ilex* (Holly with berries only)
- Class 86. *Osmanthus fragrans* (Tea Olive)
- Class 87. *Rhododendron* (Azalea)
- Class 88. Any other worthy flowering, fruited, coned, or berried branch of a wooded shrub or tree.

Let's All Go to the Movies

SECTION H

Once Upon A Forest (1993)

Non-Flowering or Foliage Branch from a Shrub or Tree

ELIGIBLE FOR ARBOREAL AWARD

Arboreal specimens should be a maximum of 30 inches in length from cut end to apical tip, and include several nodes and the central leader.

- Class 89. *Abelia*
- Class 90. *Acer palmatum* (Japanese Maple)
- Class 91. *Aucuba japonica*
- Class 92. *Buxus microphylla* (Boxwood)
- Class 93. *Eriobotrya japonica* (Loquat - non-flowering)
- Class 94. *Eucalyptus*
- Class 95. *Fatsia japonica*
- Class 96. *Ilex* (Holly)
- Class 97. *Loropetalum chinensis*
- Class 98. *Magnolia grandiflora*
 - a. 'Little Gem', Small leaf
 - b. 'Southern Magnolia', Large leaf
- Class 99. *Pittosporum*
 - a. *P. tenuifolium*, Green
 - b. *P. tobira* (*variegata*) variegated
- Class 100. *Podocarpus* (Yew)
- Class 101. *Viburnum*
- Class 102. Any other worthy non-flowering or foliage branch from a shrub or tree not listed.

Let's All Go to the Movies

SECTION I

War of the Roses (1989)

Roses

ELIGIBLE FOR AWARD OF MERIT

A minimum of two leaves, each with five leaflets is required.

- Class 103. Climbing Roses
- Class 104. Floribunda
- Class 105. Grandiflora
- Class 106. Hybrid Tea
- Class 107. Miniatures
- Class 108. Polyantha (spray)
- Class 109. Shrub Rose
 - a. Knockout Rose
 - 1. Pink
 - 2. Red
 - b. Drift
 - c. Any other worthy shrub rose not listed.
- Class 110. Any other worthy rose not listed.

SECTION J

Battle Of The Bulbs (2010)

Cut Specimens from Bulbous Structures

ELIGIBLE FOR AWARD OF MERIT

Specimen must be greater than 10 inches.

- Class 111. *Caladium x hortulanum*
- Class 112. *Canna*
- Class 113. *Crinum*
- Class 114. *Dahlia*
- Class 115. *Hedychium* (Ginger Lily)
- Class 116. *Lycoris radiata* (Spider Lily)
- Class 117. Any other worthy cut flower from bulbous structures not listed.

Let's All Go to the Movies

SECTION K

One Flew Over Cuckoo's Nest (1975)

Fruits/ Vegetables/ Nuts

ELIGIBLE FOR AWARD OF MERIT

Specimen should be at right stage of maturity for best taste and quality. Staged on clear plastic plate. Quantity per plate: Large (cabbage) 1; Medium (tomatoes) 3 to 5; Small (cherry tomatoes) 12.

- Class 118. Fruits
- Class 119. Vegetables
 a. Eggplant
 b. Okra
 c. Peppers
 d. Squash
 e. Tomatoes
- Class 120. Nuts

SECOND SHOW ONLY

SECTION L

Little Shop of Horrors (1986)

Flowering Container - Grown Plants

ELIGIBLE FOR GROWER'S CHOICE AWARD

Multiple plantings are allowed if they are the same genus, species and variety. No larger than 16 inches diameter and no longer than 3 inches below bottom of container.

- Class 121. *Begonia*
 a. *B. coccinea* (Angel Wing)
 b. *B. semperflorens* (Wax)
- Class 122. *Bromelia* (Bromeliad with flower bract)
- Class 123. *Impatiens*
- Class 124. *Orchid*
- Class 125. *Saintpaulia* (African Violet)
- Class 126. Any other worthy flowering container not listed.

Let's All Go to the Movies

FIRST and SECOND SHOW

SECTION M

Midnight In The Garden Of Good and Evil (1997)

Foliage Container - Grown Plants

ELIGIBLE FOR GROWER'S CHOICE AWARD

Multiple plantings are allowed if they are the same
genus, species and variety.

- Class 127. Cactus/succulent/Bromeliad in a container
- Class 128. Decorative/variegated foliage in a container
a. *Begonia* (non-flowering)
b. *Codiaeum variegatum* (Croton)
c. *Coleus scutellarioides* (Coleus)
d. Any other worthy foliage container grown plant not listed.
- Class 129. Fern and fern-like in a container
- Class 130. Herb container
- Class 131. All green foliage container

Let's All Go to the Movies

SECOND SHOW ONLY

SECTION N

Field of Dreams (1989)

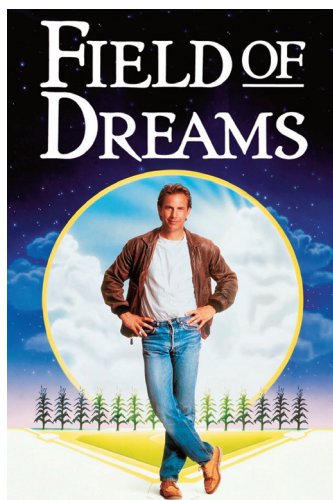
Planters

ELIGIBLE FOR GROWER'S CHOICE AWARD

A grouping of three (3) or more botanically different plants with similar cultural requirements such as light, water, and humidity. Naturalistic accessories permitted in all combination plantings but must be in scale with plantings and container, and theme appropriate to the plants. The container must be easily moveable, no larger than 16 inches in diameter.

Diagram of plant names must be included.

- Class 132. Any combination of three or more plants in a standard pot 16 inches or less.
- Class 133. Any plant or plants in an unconventional, easily movable container, ex. watering can, boots, wood, and baskets.
- Class 134. Any plant or plants combined in a conventional, **rectangular window box** container. Container must be of light weight and easily movable. Not greater than 30 inches in length.



Let's All Go to the Movies

FIRST AND SECOND SHOW

DIVISION III - EDUCATION

Screen Play

ELIGIBLE FOR EDUCATIONAL TOP EXHIBITOR AWARD

CONSULTANTS: DEBBIE BOUTELIER 309-4959
CAROLYN GRAY 354-5057
Pre-Registration is required.

A purpose of the Education Division is to inform the public about goals and objectives of the National Garden Club.

EDUCATION RULES

1. Education Exhibits may be the work of more than one individual or organization, unless a Student Judge or an Accredited Judge is seeking exhibiting credit for preparing an Education Exhibit.
2. An exhibit must cover a minimum of eighteen (18) square feet of surface area.
3. Plant material is not required, although the use of plant material is encouraged where appropriate.
4. Exhibit will be staged on an eight (8) foot table draped in black with a neutral wall backdrop.
5. Advanced registration with the Education Entries Chairman is required by June 6, 2024. Description of the exhibit is submitted by exhibitor.
6. The Scale of Points for Education Exhibits is listed in the *HANDBOOK FOR FLOWER SHOWS*, Chapter 14 and is listed in this schedule at the end of the Education Division.
7. No artificial plant material is permitted.
8. Entry cards for the Education Division are available from the Education Chairman.

Let's All Go to the Movies

SCALE OF POINTS

Criteria	Value (points)
Educational Value	
Interest to Viewer	25
Clear, concise presentation	15
Adequate Signage	10
Conforms to NGC Objectives	10
Staging	
Craftsmanship/Technique	10
Distinction	10
<u>Creativity and Expression</u>	<u>20</u>
TOTAL	100

EDUCATION EXHIBITS

FIRST SHOW

October 4, 2024

Exhibit 1 Invasive Species of Alabama

Learn how we can help to control and eradicate invasive species in our communities.

Resource Alabama Invasive Plant Council: <https://www.se-eppc.org/alabama.cfm> or <https://www.invasive.org/species/list.cfm?id=71>

Exhibit 2 Native Plants of Alabama

Native plants add so much to our world for animals', and birds' habitats and our enjoyment of their beauty. Alabama Native Plants include long leaf pine, Southern Magnolia, trumpet vine, Coreopsis, and Black-eyed Susan.

SECOND SHOW

October 9, 2024

Exhibit 1 Plant America

Encourages NCG's mission to promote the love of gardening, floral design, civic, and environment responsibility.

Exhibit 2 Wildlife Habitat Certification Program

Supports the National Wildlife Federation's programs to inspire others to make a difference and address the issues leading to declining habitat for wildlife nationwide.

Let's All Go to the Movies

DIVISION IV - YOUTH DIVISION

Ferris Bueller's Day Off (1986)

ELIGIBLE AGES ARE 8 - 18 YEARS OLD

GENERAL YOUTH RULES

1. All NGC policies and rules apply.
2. The Adult Scales of Points are used to judge each youth exhibit. (Schedule pg. 33 and pg. 35).
3. Youth exhibits are judged by the NGC Standard System of Awarding.

YOUTH HORTICULTURE RULES

1. All horticulture exhibits must be grown by the exhibitor, though plants could be part of a family garden or yard.
2. Horticulture exhibits must follow Adult Horticulture Rules (Schedule pg. 14 - 15).

SCALE OF POINTS

All Cut or Container-grown Horticulture Specimens and Collections (Arboreal, Flowering, Foliage, Fruit/Vegetable/Nut)

Criteria	Value (Points)
Conformance	5
Plant Identification	5
Peak of Perfection	
Form	20
Color	20
Maturity/Size	20
Condition/Blemishes	15
Grooming/Staging	
Grooming	10
Staging	<u>5</u>
TOTAL	100

Let's All Go to the Movies

FIRST AND SECOND SHOW

SECTION A YOUTH EXHIBITS - HORTICULTURE

Ferris Bueller's Day Off (1986)

ELIGIBLE FOR TWO YOUTH TOP EXHIBITOR AWARDS - HORTICULTURE
(ONE FOR EACH AGE GROUP)

CONSULTANT: MARSHA KILLIAN: 312 - 6290
Pre-Registration is required.

SECTION A-1

The Secret Garden (1993)

AGES 8 - 12 YEARS OLD

- Class 1. Cut Decorative Foliage
- Class 2. Cut Flower(s) from Annuals
- Class 3. Cut Flower(s) from Perennials
- Class 4. Fruits/Vegetables/Nuts
- Class 5. Herbs
- Class 6. Vines

SECTION A-2

The Secret Life of Plants (1978)

AGES 13 - 18 YEARS OLD

- Class 7. Cut Decorative Foliage
- Class 8. Cut Flower(s) from Annuals
- Class 9. Cut Flower(s) from Perennials
- Class 10. Fruits/Vegetables/Nuts
- Class 11. Herbs
- Class 12. Vines

Let's All Go to the Movies

FIRST SHOW ONLY

YOUTH BOTANICAL ARTS: PHOTOGRAPHY RULES

CONSULTANTS: ROSE WINKLER 313-2002
BETH DEBUSK 538-5534
Pre-Registration is required.

1. Image size shall be 8 inches x 10 inches in color.
2. Image should be mounted on firm background and must be over matted with 11 inches x 14 inches single black matting. No frames permitted.
3. Professional printing and matting is permitted but not required.
4. Each exhibitor may enter one photograph in each sub-class. There is no fee to enter.
5. Each photograph must be accompanied by an Exhibitor Tag which must be completed in pencil.
6. Pre-registration is required. Please email or mail completed registration form to Youth Botanical Arts:Photography Chairman by September 6, 2024.
7. Registration form and Exhibitor Tags are available from the Youth Botanical Arts: Photography Chairman and are available online at the Alabama National Fair website. <https://alnationalfair.org/flower-show/>
8. Photography will be accepted no later than Monday, September 23, 2024 from 2:00 p.m. to 5:00 p.m.
9. Judging will take place on Wednesday, October 2, 2024 at 12:00 noon.
10. First, Second, Third, and Honorable Mention ribbons may be awarded in accordance with Photography Scales of Points. (Schedule pg. 35).
11. It is the exhibitor's responsibility to remove their photos on Tuesday, October 15, 2024 from 7:30 a.m. to 12 noon.

SCALE OF POINTS FOR PHOTOGRAPHY

Conformance	5
Interpretation of Class Title	10
Composition	25
Artistry/Creativity	25
Technical Achievement	25
Distinction/Impact (Wow Factor)	10
TOTAL	100

Let's All Go to the Movies

DIVISION IV - YOUTH

Ferris Bueller's Day Off (1986)

SECTION B

BOTANICAL ARTS: YOUTH PHOTOGRAPHY EXHIBITS

Technicolor Magic

ELIGIBLE FOR TWO YOUTH TOP EXHIBITOR AWARDS -
BOTANICAL ARTS PHOTOGRAPHY
(ONE FOR EACH AGE GROUP)

Section B - 1: *Producer's Fantasy* Ages 8 - 12

Class 1. *Fern Gully (1992)*

Flora (In natural setting only)

- a. Portrait (Single Subject)
 - 1) Flower
 - 2) Plant/Shrub
 - 3) Tree/Leaf
- b. Multiple Subjects
 - 1) Flowers
 - 2) Plants/Shrubs
 - 3) Trees/Leaves

Class 2. *A Bug's Life (1998)*

Flora with Fauna

- a. Plants with Amphibians and Reptiles
- b. Plants with Birds
- c. Plants with Insects
 - 1) Plants with Bees
 - 2) Plants with Butterflies
 - 3) Plants with Other Insects
- d. Plants with Mammals

Class 3. *Veggie Tales (1993)*

Container Gardening Outside

- a. Flowering Plant(s) in a Container
- b. Non-flowering Plant(s) in a Container
- c. Vegetables in a Container

Section B - 2: *Director's Cut* Ages 13 - 18

Class 1. *The Lorax (2012)*

Flora (In natural setting only)

- a. Portrait (Single Subject)
 - 1) Flower
 - 2) Plant/Shrub
 - 3) Tree/Leaf
- b. Multiple Subjects
 - 1) Flowers
 - 2) Plants/Shrubs
 - 3) Trees/Leaves

Class 2. *Jungle Book (2006)*

Flora with Fauna

- a. Plants with Amphibians and Reptiles
- b. Plants with Birds
- c. Plants with Insects
 - 1) Plants with Bees
 - 2) Plants with Butterflies
 - 3) Plants with Other Insects
- d. Plants with Mammals

Class 3. *Jack and The Beanstalk (2009)*

Container Gardening Outside

- a. Flowering Plant(s) in a Container
- b. Non-flowering Plant(s) in a Container
- c. Vegetables in a Container

Let's All Go to the Movies

FIRST SHOW ONLY

DIVISION V - BOTANICAL ARTS

Screen Plays

SECTION A ARTISTIC CRAFTS

Consultants: Julie Tyus (256) 206-5577

June Cyrus 313-0068

Pre-registration is required.

Each class will consist of a minimum of four (4) exhibits.

ELIGIBLE FOR BOTANICAL ARTS ARTISTIC CRAFTS AWARD (SECTION AWARD)

My Fair Lady (1964)

BOTANICAL ARTS: ARTISTIC CRAFTS RULES

1. Exhibit must contain some fresh and/or dried plant material. Only dried material may be treated.
2. No artificial, endangered or locally invasive plant material may be used.
3. Schedule may determine type of craft, staging, and number of entries.
4. A card listing plant material must be included with all artistic craft entries.

SCALE OF POINTS FOR ARTISTIC CRAFTS

Conformance	25
Design	30
Craftsmanship/Technique	25
Distinction	<u>20</u>
TOTAL	100

BOTANICAL ARTS ARTISTIC CRAFTS CLASSES

Class 1 *Breakfast at Tiffany's (1961)*

Napkin Ring - bought or homemade, decorated, using live or dried plant material. Size not to exceed 6 inches wide by 6 inches deep, staged on a 30 inches high table covered and draped in black.

Class 2 *The Name of the Rose (1986)*

Flower Pot - bought or homemade, decorated using live or dried plant material. Size not to exceed 8 inches in diameter and 8 inches high, staged on a 30 inches high table covered and draped in black.

Class 3 *Restart the Earth (2005)*

Kissing Ball - ball excluding plant material not greater than 9 inches diameter. Staged on a 30 inches high table covered in black and draped in black.

Let's All Go to the Movies

FIRST SHOW ONLY

DIVISION V - BOTANICAL ARTS

My Fair Lady (1964)

SECTION B PHOTOGRAPHY

Consultants: Rose Winkler: 313 - 2002

Beth DeBusk: 538-5534

Pre-registration is required.

The Secret Life of Walter Mitty (2013)

BOTANICAL ARTS: PHOTOGRAPHY RULES

The Photography section is intended to stimulate gardening interest, photographic abilities and National Garden Club goals and objectives.

1. Division V is open to Adult Amateur Photographers. An amateur photographer is a person who earns less than 10% of his/her income as a photographer.
2. All exhibits must relate to horticulture, gardening design, or other NGC goals, objectives and/or initiatives.
3. Schedule determines the type of photography, exhibit, and staging.
4. Image size shall be 8 inches by 10 inches in color, unless stated otherwise in the schedule.
5. Image should be mounted on firm background and must be over matted with 11 inches by 14 inches **SINGLE** black matting. No frames permitted.
6. Professional printing and matting is permitted but not required.
7. Each photograph must be accompanied by an Exhibitor Tag with the exhibitor's name, phone number, email, entry class, plant materials, and/or scientific name. Exhibitor Tag must be completed in pencil.
8. Pre-registration is required for the Botanical Arts: Photography section. Please email or mail completed registration form to Botanical Arts Photography Chairman by September 6, 2024.

Let's All Go to the Movies

BOTANICAL ARTS: PHOTOGRAPHY RULES CONTINUED

9. Registration form and exhibitor tags for the Botanical Arts: Photography section are available from the Botanical Arts - Photography Chairman. Photography registration form is also available online at Alabama National Fair website, <https://alnationalfair.org/flower-show/>.
10. Photo may be enhanced by the exhibitor with cropping, filters, adjustment, and/or darkroom techniques.
11. Judging shall be done by a panel of 3 which may consist of one National Garden Club Accredited Judge and two recognized photography experts or three recognized photography experts. (HB pg. 96)
Exhibits are judged by the NGC Standard System of Awarding (HB pg. 39, 45)
12. First, second, third, and honorable mention ribbons may be awarded in accordance with the Photography Scale of Points. (schedule pg. 40)
13. Division V, Section B is eligible for the Botanical Arts Photography Award.
14. Division V, Section B is not eligible for exhibiting credit.
15. Each exhibitor may enter one photograph in each sub-class. There is no fee to enter.
16. The Southern Charm and Yaupon Garden Clubs and Alabama National Fair are not responsible for damage and/or loss of photos.
17. Photographs will be accepted no later than Monday, September 23, 2024 from 2:00 p.m. to 5:00 p.m. Enter the coliseum at the South Entrance. Committee has the right to subdivide entries and refuse any item.
18. Judging will take place on Wednesday, October 2, 2024 at 12:00 noon.
19. It is the exhibitor's responsibility to remove their photos on Tuesday, October 15, 2024, from 7:30 a.m. to 12 noon.
20. Each photograph must be the work of the person whose name appears on the entry tag.

Let's All Go to the Movies

BOTANICAL ARTS: PHOTOGRAPHY RULES CONTINUED

SCALE OF POINTS FOR PHOTOGRAPHY

Conformance	5
Interpretation of Class Title	10
Composition	25
Artistry/Creativity	25
Technical Achievement	25
Distinction/Impact (Wow Factor)	<u>10</u>
TOTAL	100

PHOTOGRAPHY EXHIBITS SECTION B

The Secret Life of Walter Mitty (2013)

Class 1. **Floral Daydreams** Flora (in natural setting only)

a. Portrait (Single Subject)

- 1) Flower
- 2) Plant/Shrub
- 3) Tree/Leaf

b. Multiple Subjects

- 1) Flowers
- 2) Plants/Shrubs
- 3) Trees/Leaves

Class 2. **Animal Kingdom Shutterbug** Flora with Fauna

a. Plants with Amphibians and Reptiles

b. Plants with Birds

c. Plants with Insects

- 1) Plants with Bees
- 2) Plants with Butterflies
- 3) Plants with Other Insects

d. Plants with Mammals

Let's All Go to the Movies

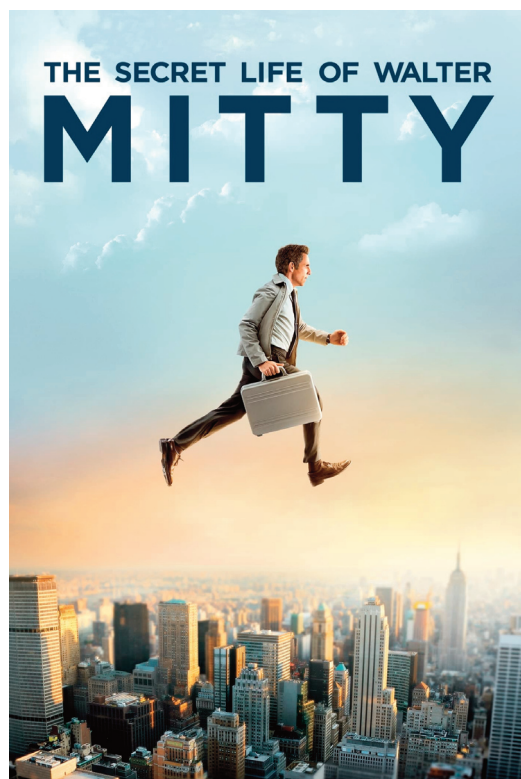
BOTANICAL ARTS: PHOTOGRAPHY EXHIBITS CONTINUED

Class 3. **Amazing Adventures** Container Gardening

- a. Flowering Plant(s) in a Container
- b. Non-flowering plant(s) in a Container
- c. Vegetable(s) in a Container

Class 4. **Fantasy Daydreams** A Unique Look at Nature

- a. Flowers, Plants, Landscapes in Black and White
- b. Fairy Gardens
- c. Flowers or Plants Growing in Unusual Places



The Southern Charm and the Yaupon Garden Clubs present to the public a combination of our best horticulture, competitive floral designs, botanical arts and education exhibits. Our dedicated Garden Club members have spent months in preparation for our annual endeavors.

The staff of the Alabama National Fair, Garrett Coliseum staff, and the members of the Kiwanis Club of Montgomery have helped make our Shows possible. It is with grateful hearts, we say "Thank You!" to those who continue a Legacy Program begun in 1953.

June Cyrus
General Flower Show Chairman

